

0

2

-

I

R

R H I N Q



PROUDLY NEW ZEALAND OWNED

Great Lake Motor Distributors and all our SsangYong
dealers are 100% NZ owned and operated.





ALL-NEW RHINO IS READY FOR WORK AND PLAY

A blend of dynamism and sophistication sets

New Rhino apart in any environment.

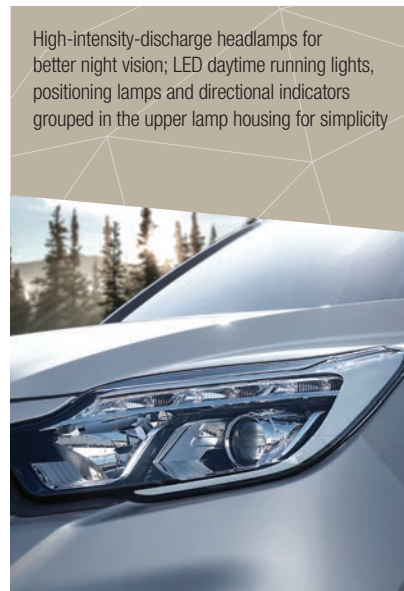
Better utility, better comfort and better versatility
make this the exciting new ute of choice.

A new, more powerful engine, dynamic styling
and better fuel efficiency are all yours with this
all-new ute from SsangYong.

The Rhino has been built for maximum value
and utility, in the way that pickup trucks were
originally intended to be designed.

A BOLD AND RUGGED LOOK UP FRONT

The eye-catching radiator grille with chrome line through the centre establish an unmistakable identity. Front and sides offer a striking blend of muscular lines and curved surfaces; circular fog lamps add a touch of sophistication.



High-intensity-discharge headlamps for better night vision; LED daytime running lights, positioning lamps and directional indicators grouped in the upper lamp housing for simplicity

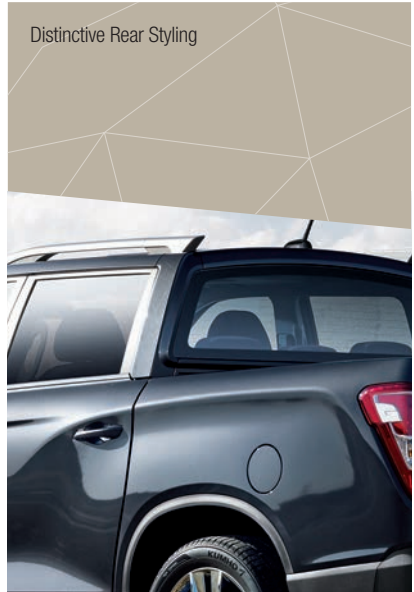


Shoulder-wing design of radiator grille for greater depth and a dynamic feel



Side repeater and puddle lamp mounted on the back of the outside mirror

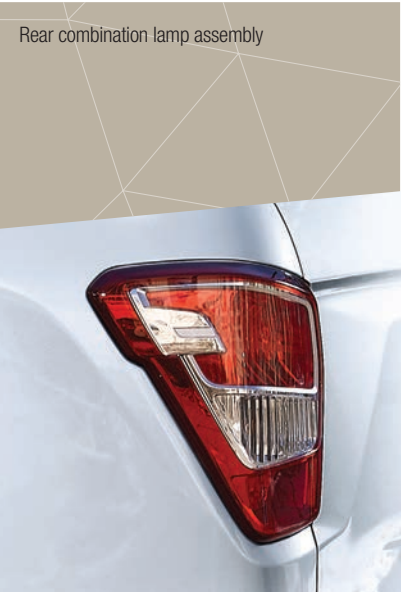




Distinctive Rear Styling



Bed inner cover
- Deck hook
- Deck power outlet



Rear combination lamp assembly

PRACTICAL AND DISTINCTIVE BEHIND

The rear is identified by the signature shoulder-wing line and wrap-around tail-lamp assembly. The black rear bumper matches front for balance. Reflex reflectors provide added visibility to vehicle for safety.

The bed is coated with an inner cover for protection, while a foldable tie-down ring is placed at each corner of the truck bed to secure cargo. In addition, an outlet is mounted near the reinforced tailgate to provide electrical power for tools and other devices.

A GREAT WORKPLACE TO BE

The ergonomic seats ensure a comfortable fit for the users, helping to reduce fatigue on long trips. Handy pockets are built into the doors front and rear to keep maps, water bottles and other essentials within easy reach.

A grip has been installed on the B pillar to assist passengers in back. In front, the centre console is equipped with a USB port, power outlet, and pair of cup-holders, and cup-holders are also placed in the second row.



CONNECTED AND CONVENIENT

Driving the Rhino is fun and easy. The tilt and telescopic steering wheel adjusts easily. Remote control and cruise control switches are mounted on the steering wheel for instant access.

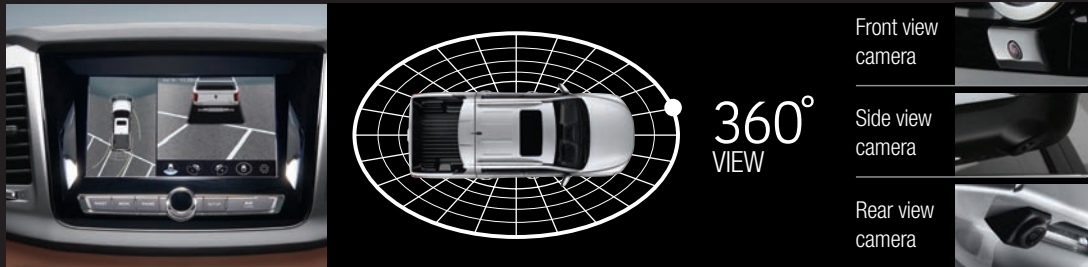
PROVIDING A FULL VIEW OF THE ENVIRONMENT OUTSIDE

Four cameras have been mounted on the outside to provide a real-world view of the area on all sides of the vehicle, making low-speed driving or parking safer and easier.

THE LATEST INFOTAINMENT

The infotainment system comes a high-definition touchscreen, which supports Apple CarPlay and Google Android Auto. System features also include radio and MP3 player functions, real-time broadcast recording, and USB port.

3D AROUND-VIEW MONITORING SYSTEM



APPLE CARPLAY AND ANDROID AUTO

Users may connect their smart phone to the display to make phone calls, check messages and listen to music while on the road.



SUPER-VISION CLUSTER



TRIPLE-MODE DIGITAL SPEEDOMETER DISPLAY



TRIP COMPUTER DISPLAY



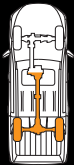


SMOOTH SHIFTING AND POWERFUL PERFORMANCE OPTIONS

The Rhino is powered by a powerful 2.2L diesel engine. Normally the vehicle runs in rear-wheel drive, which enhances handling stability by optimising weight distribution, but the driver is free to select one of two four-wheel drive modes as needed. The Rexton can tow loads of up to 3.5 tons, the highest for this class of SUV. Also available is our Rhino Petrol model with a smooth 2.0L petrol turbo engine and 2WD only. With a 2.8 ton tow capacity, this is also a great choice to have.

PART-TIME 4WD

Part-time four-wheel drive allows the driver to choose when to activate the system, depending upon changing conditions on or off the road. Operation safety and efficiency are thus superior to what by the full-time 4WD system provides.



2WD
High-speed
range



4WD
Low-speed
range



4WD
High-speed
range

FIVE-LINK REAR SUSPENSION SYSTEM

The axle is connected on the left and right to provide a smooth ride even when the road surface gets rough. Such a system is preferred for off-road operation.



AISIN 6-SPEED AUTO TRANSMISSION

A high ratio spread optimises shift quality under diverse road conditions. Control of changes in speed is solid, enabling the automatic transmission to maintain a smooth shifting feel. The Manual mode (shifting up or down) delivers rapid responsiveness for a more dynamic driving performance.



» e-XDi 220 diesel engine (Euro 6-compliant)



Max. Power
(ps / rpm)

181 / 4,000



Max. Torque
(Nm / rpm)

420 / 1,400~2,800



Displacement
(CC)

2,157

» e-XGDi200T



Max. Power
(ps / rpm)

225 / 5,500



Max. Torque
(Nm / rpm)

350 / 1,500~4,500



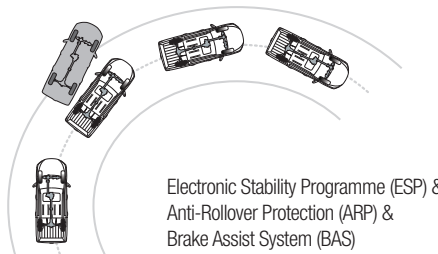
Displacement
(CC)

1,998

SAFETY ALWAYS A PRIORITY

The Rhino comes equipped with six airbags, including curtain airbags. The electronic stability programme monitors road conditions and vehicular status constantly, adjusting engine output and braking whenever the driver is about to lose control. The new Rhino also comes with a locking differential system to provide better traction on steep and slippery gradients, and to increase towing performance.

ESP Electronic Stability Programme



Emergency Stop Signal (ESS)



Hill Start Assist (HSA)



Hill Descent Control (HDC)

LOCKING DIFFERENTIAL

On muddy or snowy surfaces, one wheel may slip or be lifted into the air. In this case, the locking differential forces both wheels on an axle to turn in unison, allowing the vehicle to recover its traction.



6 AIRBAGS

- 1 Driver's airbag
- 2 Passenger's airbag
- 3, 4 Driver's & passenger's side airbags
- 5, 6 Curtain airbags



SAFETY SYSTEMS | AIRBAGS



SOLID FUNDAMENTALS

The new-concept Quad Frame helps to keep road surface and engine noise out of the cabin.

At the same time, it is designed to minimise the possibility of injury to vehicular occupants in a collision.

QUIETER INSIDE

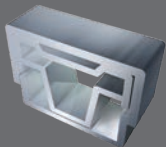
The rubber engine mounts have been enlarged to reduce engine noise and vibration while idling or traveling.

Quadruple-layered seals are on the top and bottom of the doors and around the windows to block out road and wind noise.



ADVANCED AUTOMOTIVE HIGH-STRENGTH STEEL

High-density, high-tensile-strength steel plate makes up 79.2% of all the steel plate used in the body-chassis, providing superb rigidity and protection against deformation in a collision. Thus, protection of the vehicular occupants has been maximised.

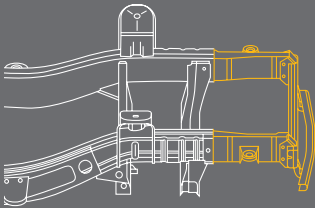


QUAD FRAME

Unlike with a monocoque structure, the engine and suspension system are attached directly to the frame, blocking the heavy shock experienced when traveling over rough road surfaces or speed bumps and ensuring maximum handling stability.

CRASH ZONE BOX

The 'crash zone' refers to that part of frame that conveys the most shock from a frontal collision to the inside of the cabin. This 'box' is designed to absorb that force, thereby protecting the people inside.





Founder of Saving the Wild, Jamie Joseph is a young woman on a critical mission – to save the beloved rhinos. With rhino horn worth more than diamonds or cocaine gram for gram, rhino poaching is lucrative and trying to stop it, seriously dangerous. PROCEEDS FROM EVERY SSANGYONG RHINO SOLD WILL GOTO HELP JAMIE JOSEPH AND HER CRUSADE TO HELP SAVE THE RHINO IN THE WILD.



S.T.Y.L.E & C.O.N.V.E.N.I.E.N.C.E



Bed dimensions



Cluster with 3.5" trip computer



Safety powered window



Tilt steering wheel system



Reinforced tailgate



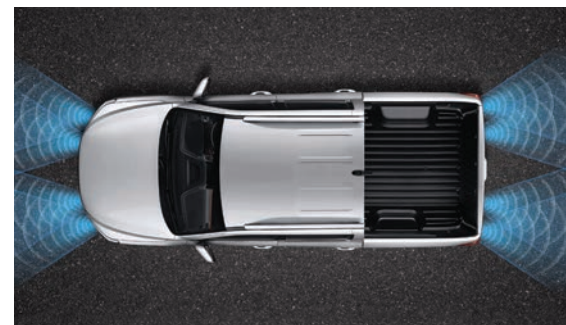
8" smart audio



2 din audio with MP3 player



Remote control switches and cruise control system on the steering wheel



Parking assist system



Dual-zone fully automatic air-conditioner/
Manual air-conditioner



Headlamp control and
automatic washer switches



Front fog lamps

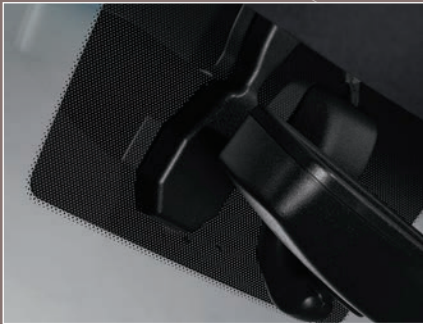
ST.YLE & CON.VENIENCE



Sunvisor



Overhead console



Front camera module with rain-sensing and automatic light control unit



USB port and power outlet



Door step lamps



Door map pocket



2nd row cup-holder



Glovebox and centre console box



Deck hook



Deck power outlet



Assist grips on the B pillar



Dual smart key

COLOUR GUIDE

WHEELS

20" Sputtering Wheel



17" Alloy Wheel



17" Steel Wheel



EXTERIOR COLOUR

Grand White (WAA)



Fine Silver (SAF)



Marble Gray (ACM)



Indian Red (RAJ)



Atlantic Blue (BAU)



Space Black (LAK)



INTERIOR COLOUR



Black seats with gray headlining

Nappa leather

TPU (thermoplastic polyurethane)

Flat woven

FEATURES LIST

	Petrol 2WD Manual	Petrol 2WD Auto	Sport Diesel 4WD Manual	Sport Diesel 4WD Auto	SPR Diesel 4WD Auto
MECHANICAL					
2.0L e-XGDi 200T Petrol engine (225ps)	•	•			
2.2L e-XDi Diesel engine (181ps)			•	•	•
Part-time 4WD			•	•	•
6-speed manual transmission	•		•		
6-speed automatic transmission		•		•	•
Double-wishbone front suspension system with coil springs	•	•	•	•	•
Five-link rear suspension with coil springs	•	•	•	•	•
Hydraulic power steering	•	•	•	•	•
SAFETY					
Ultra-rigid frame for greater strength, less vibration and noise	•	•	•	•	•
Door impact beams for optimal protection from side collisions	•	•	•	•	•
Electronic Stability Control ESP, Traction Control TCS, Hill Descent Control HDC, Active Roll-Over Protection ARP, Emergency Stop System ESS	•	•	•	•	•
Dual Airbags for driver and front passenger	•	•	•	•	•
Side Airbags for driver and front passenger					•
Curtain Airbags for driver and front passenger					•
Seatbelt load limiters and pre-tensioners	•	•	•	•	•
4-channel anti-lock braking system	•	•	•	•	•
Door courtesy lamps	•	•	•	•	•
Immobilizer system	•	•	•	•	•
Speed sensitive door lock	•	•	•	•	•
ISO-FIX and tether anchorage for baby car seat	•	•	•	•	•
Seatbelt reminder for driver	•	•	•	•	•

	Petrol 2WD Manual	Petrol 2WD Auto	Sport Diesel 4WD Manual	Sport Diesel 4WD Auto	SPR Diesel 4WD Auto
APPEARANCE					
17" Steel wheels	•				
17" Alloy wheels		•	•	•	
20" Alloy Chrome wheels					•
Full-sized spare tyre	•	•	•	•	•
Integrated Projection Headlamps					•
25W HID headlamps	•	•	•	•	
Exterior door handles in body colour	•	•	•	•	•
Clean door sills	•	•	•	•	•
Pole antenna	•	•	•	•	•
Outside door handles in body colour with LED side repeaters	•	•	•	•	•
Rubber blade wiper	•	•	•	•	•
Front & Rear Fog Lamps	•	•	•	•	•
Daytime Running Lights	•	•	•	•	•
CLIMATE CONTROL					
Front dual auto air conditioning system			•	•	•
Manual air conditioning	•	•			
Rear heating duct	•	•	•	•	•
SEATS					
8-way power adjustable driver's seat					•
6-way power adjustable passenger's seat					•
Heated front seats					•
Ventilated Front Seats					•
2nd row seats with folding centre armrest	•	•	•	•	•
Front sliding headrest	•	•	•	•	•
Height adjustable driver's seat	•	•	•	•	•
Premium Nappa Leather Interior					•
TPU Interior			•	•	
Cloth Interior	•	•			

CONVENIENCE

Cruise control system	•	•	•	•	•
Rain Sensing Wipers					•
Supervision Cluster					•
Standard Cluster	•	•	•	•	
Luxurious leather knob for gear shift lever	•	•			
Floor mats	•	•	•	•	•
Dual remote key system	•	•	•	•	•
2-Din audio system with mp3 and CD player	•	•			
USB & Aux. port	•	•	•	•	•
8 inch Media Centre with Reverse Camera			•	•	•
Apple Carplay and Android Auto			•	•	•
4 speakers	•	•			
6 speakers			•	•	•
360° Monitoring System					•
Bluetooth hands-free	•	•	•	•	•
Audio remote control switch on steering wheel	•	•	•	•	•
Heated and adjustable outside mirrors					•
Trip computer	•	•	•	•	•
Bed inner cover	•	•	•	•	•
Heated rear glass with timer to defrost					
Spray washer nozzle	•	•	•	•	•
Deluxe overhead console in easy reach	•	•	•	•	•
Handy centre storage console	•	•	•	•	•
Cup and stationary holder in the console	•	•	•	•	•
Sun-visors with vanity mirror and illumination	•	•	•	•	•
Roof Rails					•

* Specifications are subject to change once stock arrives and we can fully check specifications.

SPECIFICATIONS

ENGINE			PETROL 2.0 (e-XGDi 200T)			DIESEL 2.2 (e-XDi 220)			
DRIVEN WHEELS			SPORT 2WD	SPORT 2WD	SPORT 4WD	SPORT 4WD	SPR 4WD		
TRANSMISSION			6MT	6AT	6MT	6AT	6AT		
EMISSION			Euro 6			Euro 6			
EXTERIOR DIMENSION	Overall Length		mm	5,095					
	Overall width		mm	1,950					
	Overall height		mm	1,840					
	Tread	Front	mm	1,640					
		Rear	mm	1,640					
	Overhang	Front	mm	890					
		Rear	mm	1,105					
	Wheelbase		mm	3,100					
	Minimum clearance	Clear	mm	215					
Min turning radius		m	5.91						
WEIGHT	Gross vehicle weight		kg	2,810	2,810	2,880	2,880	2,880	
	Kerb weight		kg	1,960~2,058	1,970~2,073	2,080~2,177	2,090~2,192	2,090~2,192	
	Gross trailer weight	Braked	kg	2,800			3,500		
		Unbraked	kg	750					
ENGINE	Fuel		-	Petrol		Diesel			
	Capacity		cc	1,998		2,157			
	Bore X Stroke		mm	86 X 86		86.2 X 92.4			
	Compression ratio		-	9.6 : 1		15.5 : 1			
	Number of cylinders		-	4 in-line					
PERFORMANCE	Max. power	kW/rpm	165 / 5,500			133.1 / 4,000			
		ps/rpm	225 / 5,500			181 / 4,000			
	Max. torque	Nm/rpm	350 / 1,500~4,500			400 / 1,400~2,800	420 / 1,400~2,800		
		kg.m/rpm	35.7 / 1,500~4,500			40.8 / 1,400~2,800			
FUEL CONSUMPTION	CO2 (combined)		g/km	228	245	211		226	
	Combined		L/100km	10.0	10.7	7.9		8.6	

* Specifications are subject to change once stock arrives and we can fully check specifications.

- The fuel economy can vary according to road conditions or driver's habits.
- The above technical data can vary slightly by regional certification requirements or sales specifications.

DIMENSIONS



Bed dimensions